

How to set path in Java

The path is required to be set for using tools such as javac, java, etc.

If you are saving the Java source file inside the JDK/bin directory, the path is not required to be set because all the tools will be available in the current directory.

However, if you have your Java file outside the JDK/bin folder, it is necessary to set the path of JDK.

There are two ways to set the path in Java:

1. Temporary
2. Permanent

1) How to set the Temporary Path of JDK in Windows

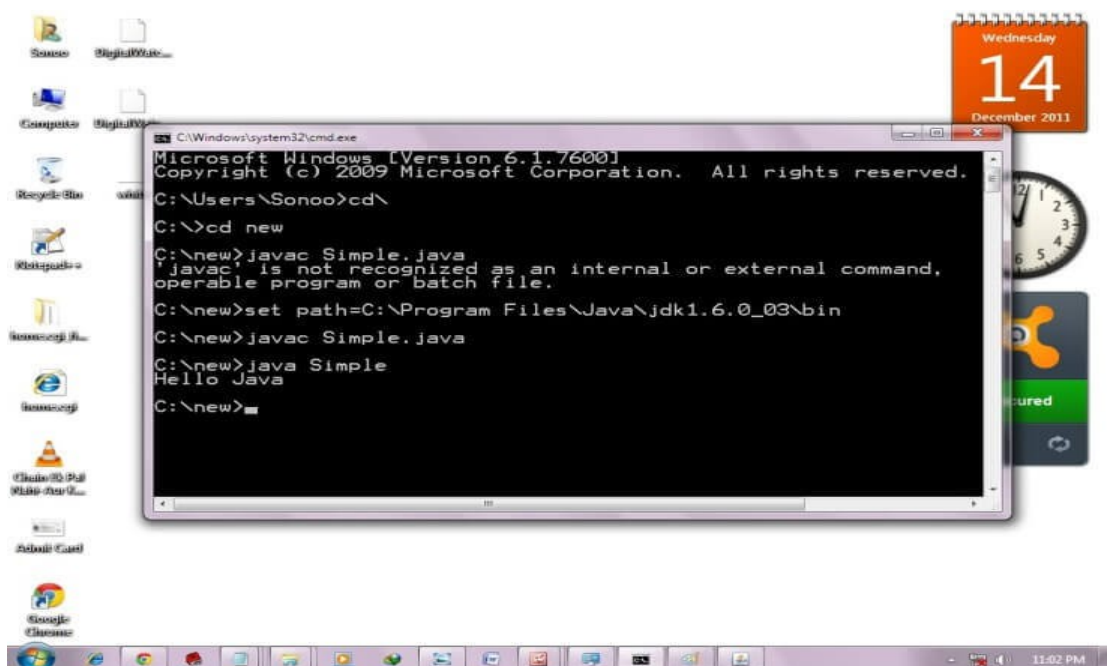
To set the temporary path of JDK, you need to follow the following steps:

- Open the command prompt
- Copy the path of the JDK/bin directory
- Write in command prompt: set path=copied_path

For Example:

```
set path=C:\Program Files\Java\jdk1.6.0_23\bin
```

Let's see it in the figure given below:



2) How to set Permanent Path of JDK in Windows

For setting the permanent path of JDK, you need to follow these steps:

- Go to MyComputer properties -> advanced tab -> environment variables -> new tab of user variable -> write path in variable name -> write path of bin folder in variable value -> ok -> ok -> ok

For Example:

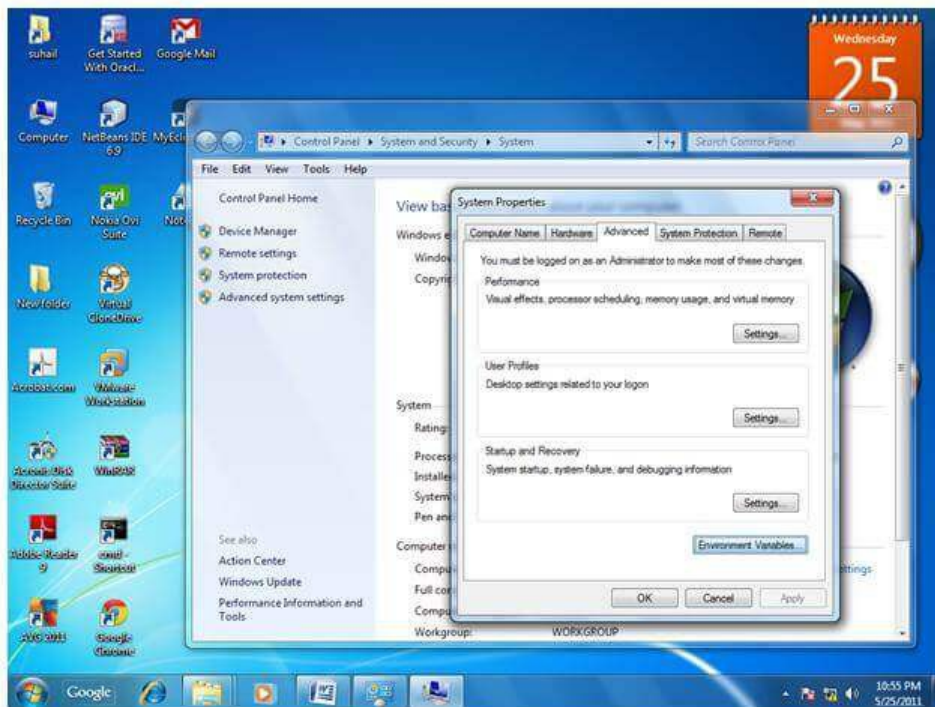
1) Go to MyComputer properties



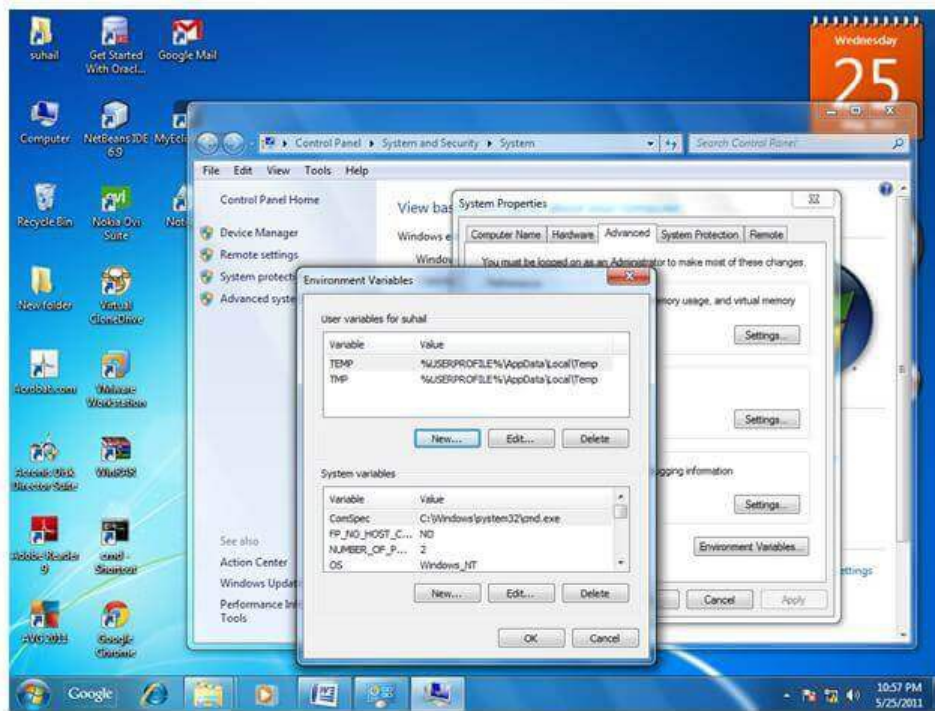
2) Click on the advanced tab



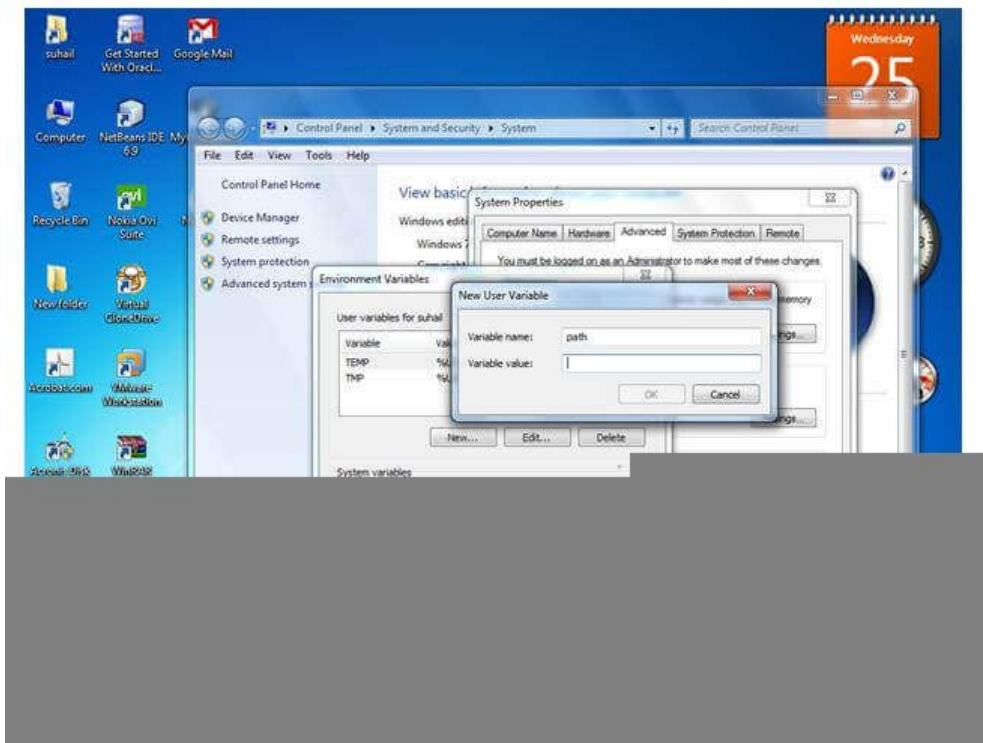
3) Click on environment variables



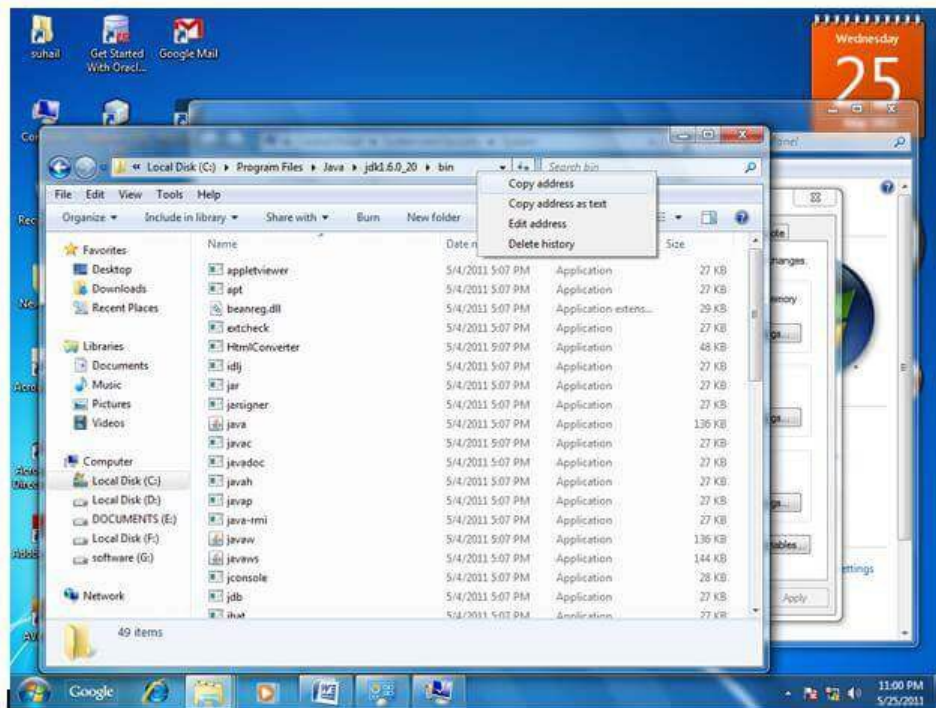
4) Click on the new tab of user variables



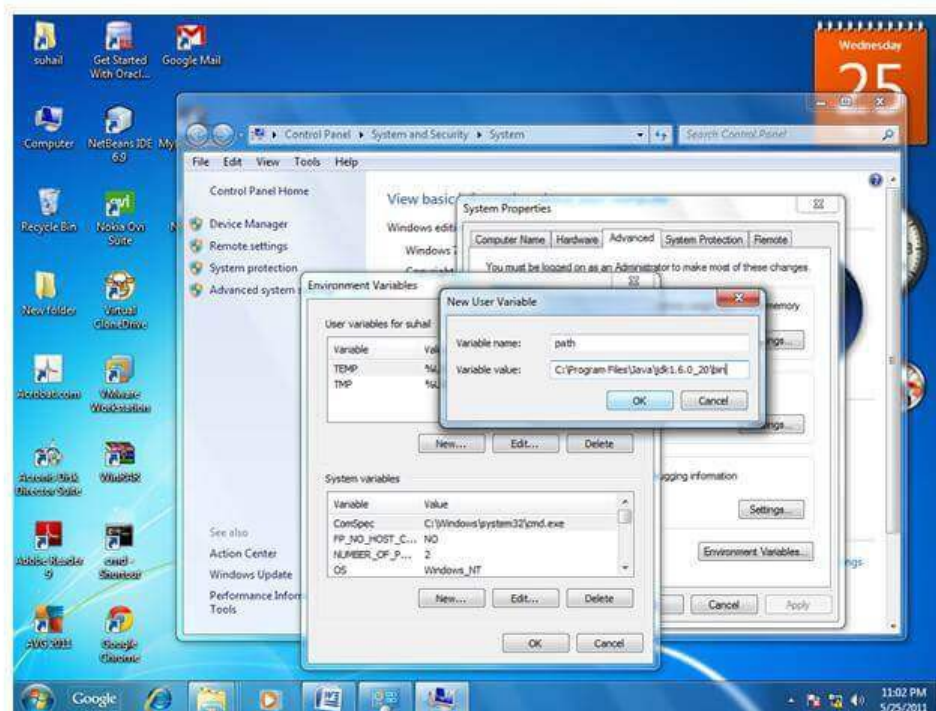
5) Write the path in the variable name



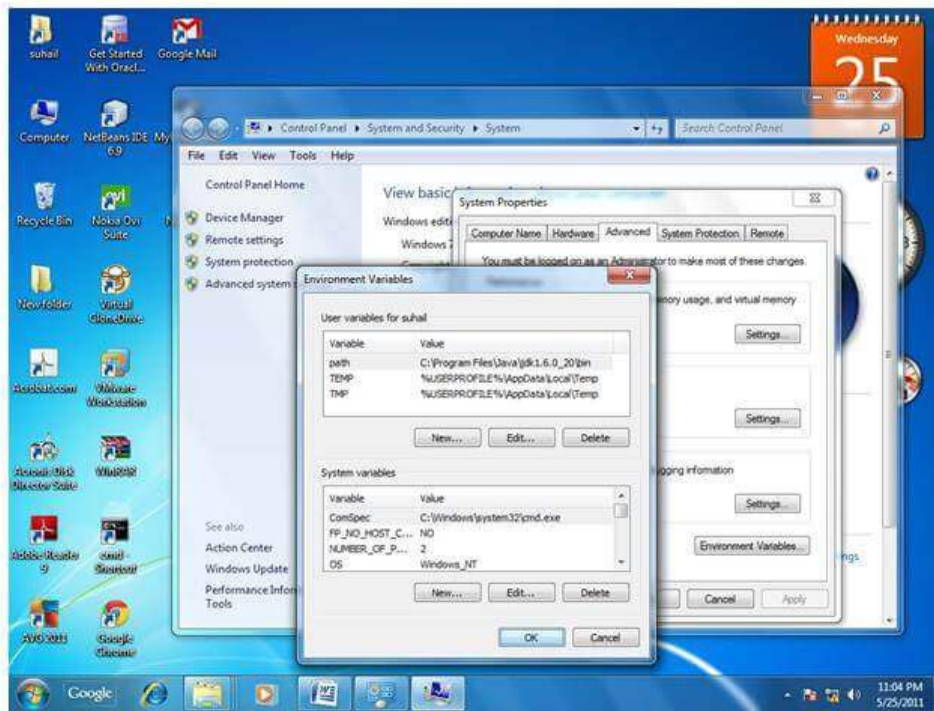
6) Copy the path of bin folder



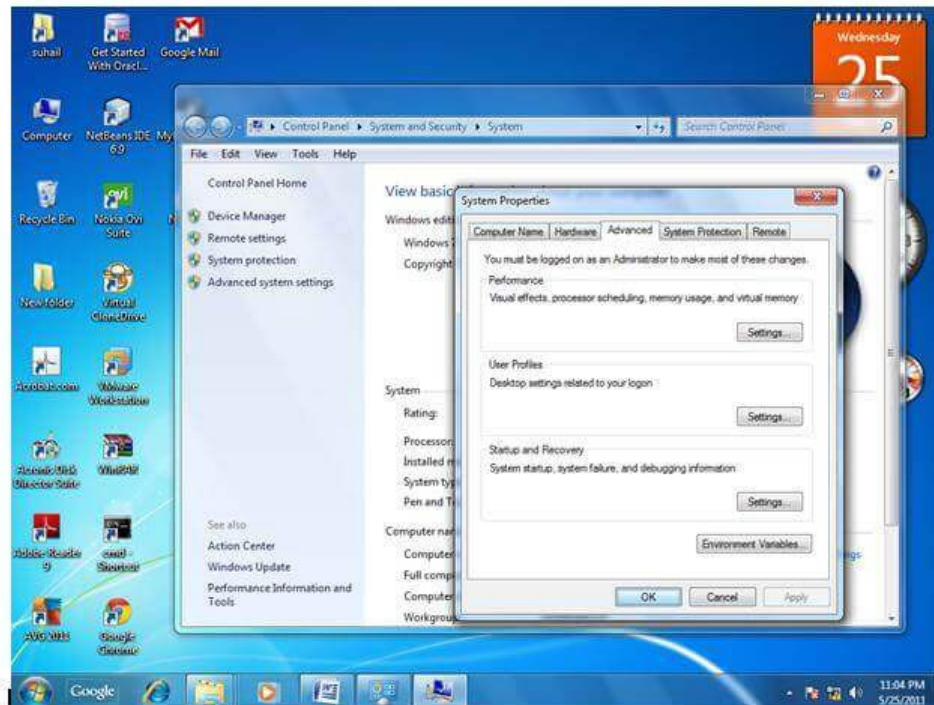
7) Paste path of bin folder in the variable value



8) Click on ok button



9) Click on ok button



Now your permanent path is set. You can now execute any program of java from any drive.